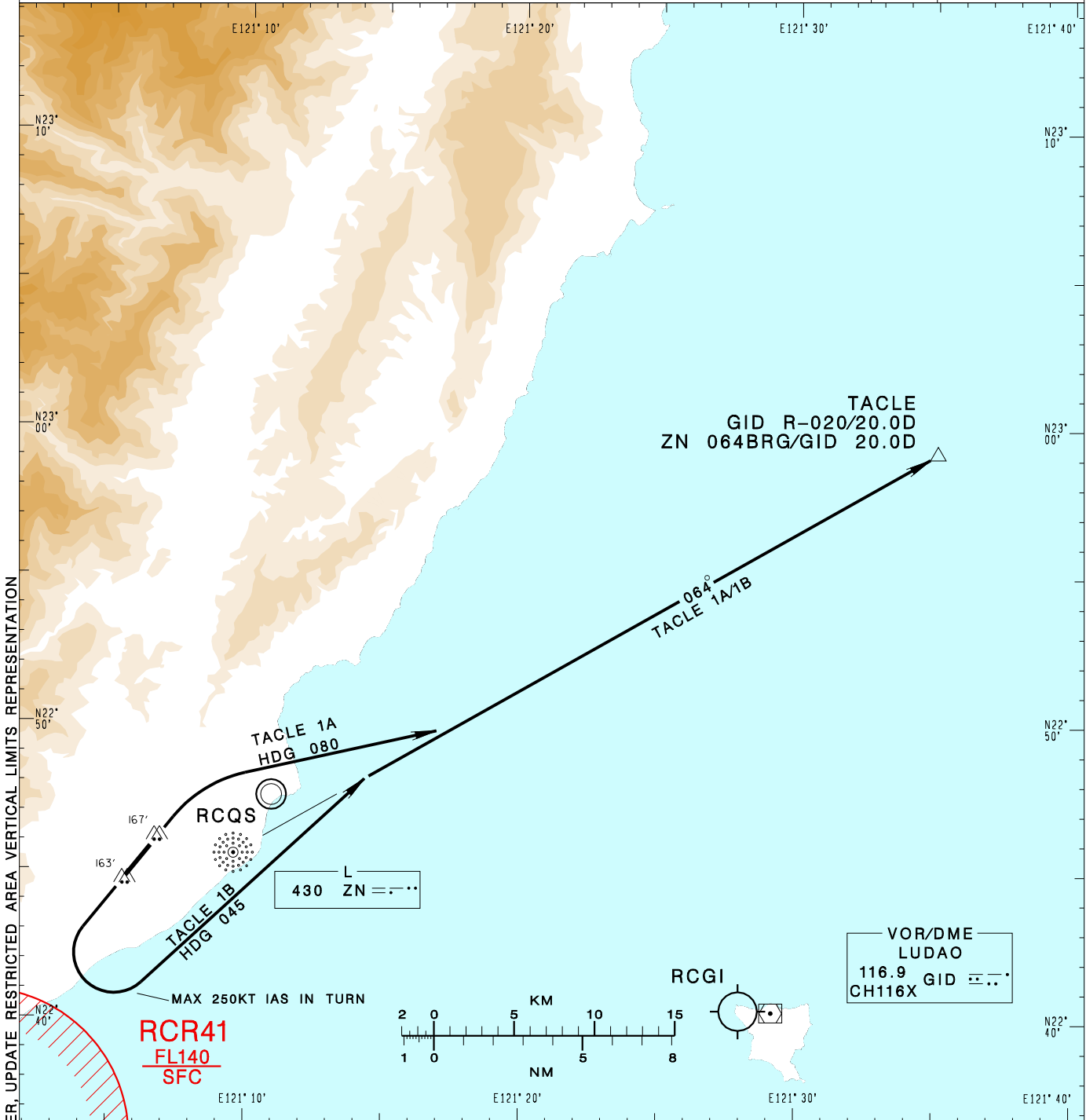


臺東/豐年機場
TAITUNG/FONGNIAN AD

RCFN SID
TACLE 1A(RWY04)
TACLE 1B(RWY22)

KAOHSIUNG APP 119.4 228.2	FONGNIAN TWR 118.1 236.6	ATIS 127.0	VAR 4° W	<p>MSA ARP 25NM</p>
Apt Elev: 143'		Trans Level: FL130		
BEARINGS ARE MAGNETIC; DISTANCES ARE NAUTICAL MILES; ELEVATIONS, HEIGHTS IN FEET				



CHANGES: NEW PAGE NUMBER, UPDATE RESTRICTED AREA VERTICAL LIMITS REPRESENTATION

TACLE ONE ALFA DEPARTURE
After departure, turn right HDG 080 to track ZN 064BRG to TACLE to join B591.

TACLE ONE BRAVO DEPARTURE
After departure, turn left HDG 045 to track ZN 064BRG to TACLE to join B591.

- NOTE**
1. TACLE 1A: Requires a minimum climb gradient of 5.0% (300ft/NM) until established on ZN 064BRG.
 2. TACLE 1B: Requires a minimum climb gradient of 6.3% (383ft/NM) until established on ZN 064BRG.
 3. Caution close-in obstacles (trees & poles): 167ft MSL, 96m northeast of RWY22 THR & 163ft MSL, 69m south of RWY04 THR.
 4. High terrain around the airport.